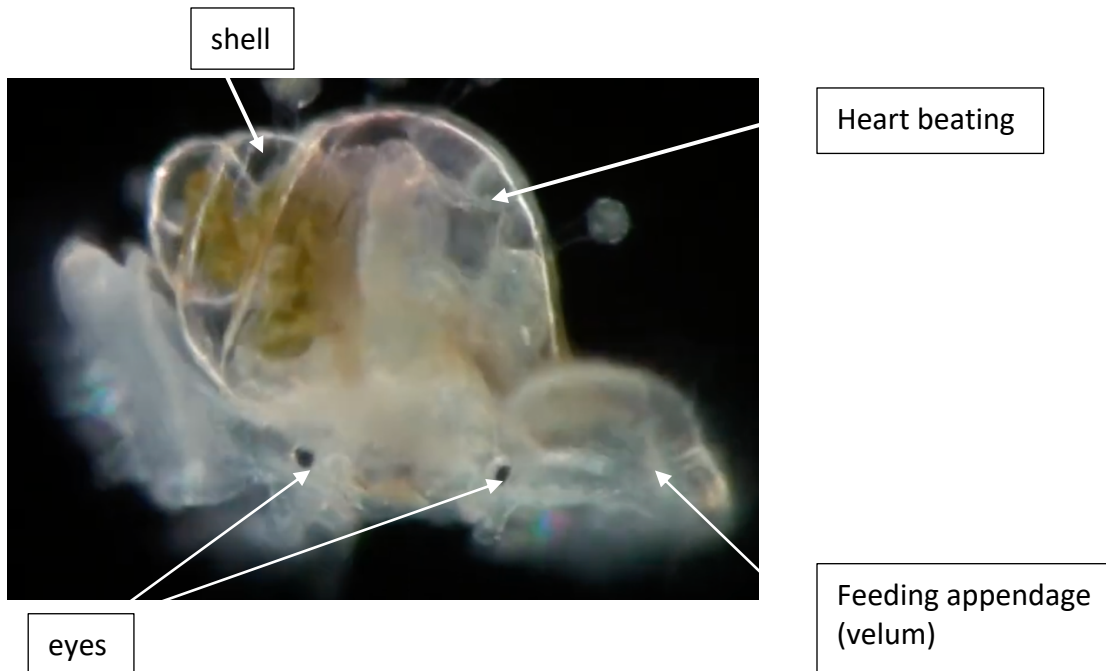


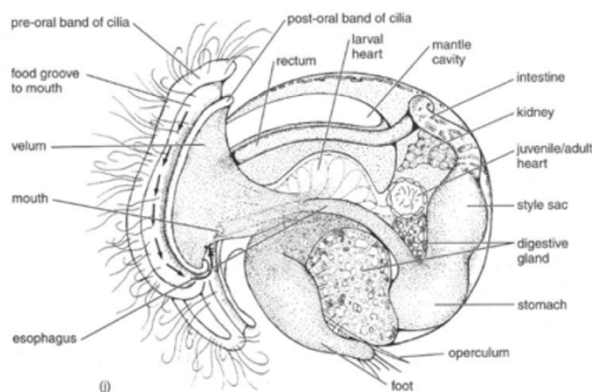
## Guide for watching videos of zooplankton feeding

### 1. Larval snail - Veliger larva

You can see the beginning of a shell on the veliger larva and beating heart.

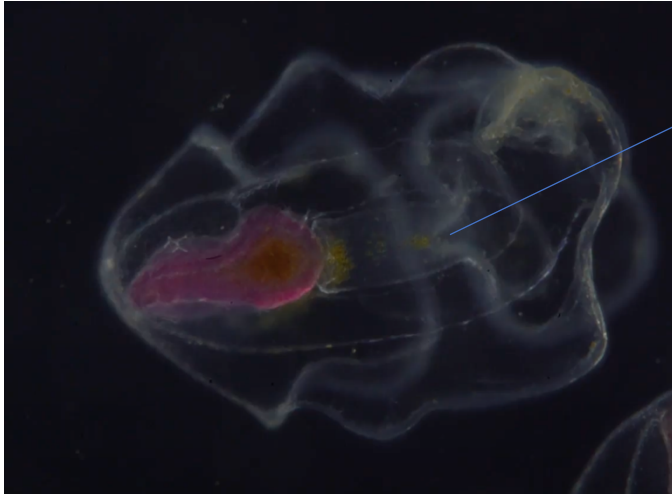


Look for the band of beating of cilia on the feeding appendage (velum). You'll see that every so often the larva will roll the feeding lobes inward to ingest the food that it has gathered.

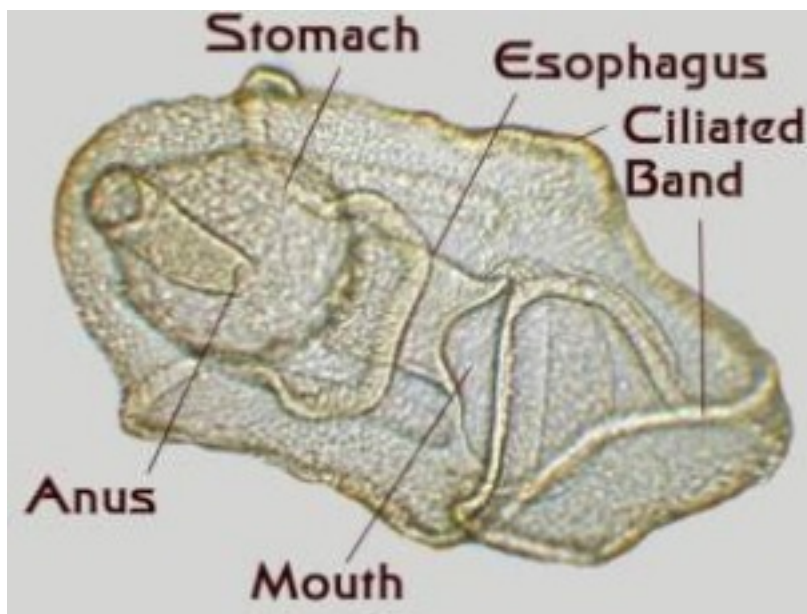


## 2. Sea star bipinnaria larva feeding

It's hard to see the actual cilia but you can tell they're beating by the movement of particles around the larva.



Watch cilia around mouth draw phytoplankton into esophagus!  
Watch for movement of the outer body to draw in food.  
You can see golden algae go through the mouth into tummy!



### 3. Crab zoea larva

Notice the long spines to aid in drifting as well as defense.



Feeding appendages

Look for heart beating

Two compound eyes

